



Delivering “Well-Rounded” Solutions

PRG is your partner in productivity

The Company

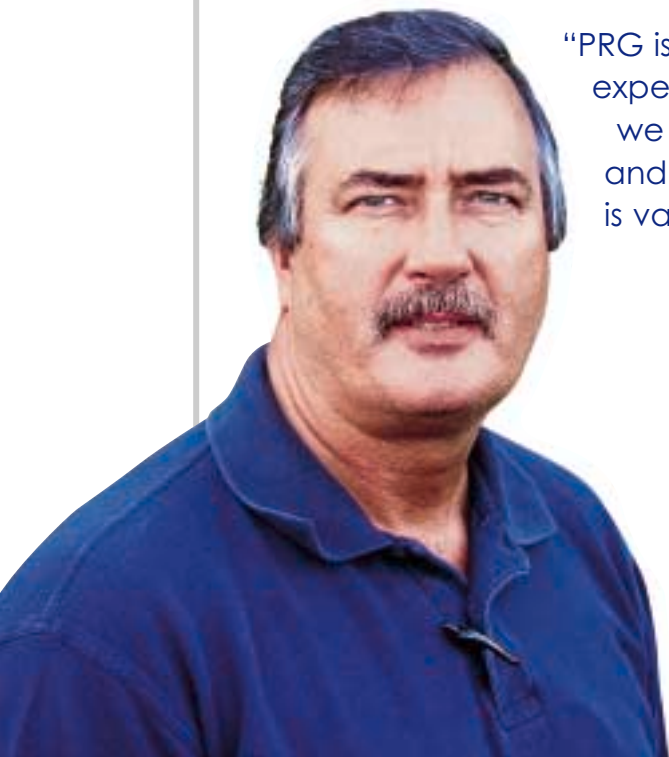
NewPage Corporation, headquartered in Dayton, Ohio, is a leading U.S. producer of coated papers in North America. The company operates integrated pulp and paper manufacturing mills in Michigan, Maryland, Maine and Kentucky. These mills have a combined annual capacity of approximately 2.2 million tons of coated paper.

The Problem

For many years, NewPage’s Wickliffe, KY mill used different suppliers for roll repair and grinding services. The lack of consistency produced mixed results.

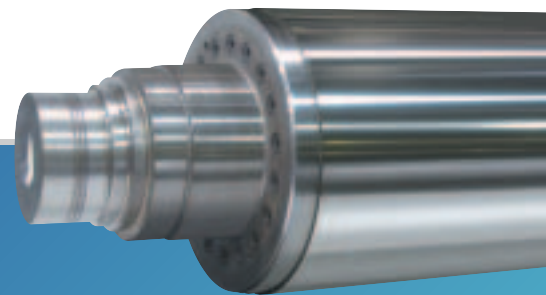
PRG’s Solutions

PRG assessed NewPage’s roll repair strategy, specifically focusing on the use of different coatings for different rolls. Today, use of both PRG’s Roll ArmorSM coatings, including tungsten carbide, and ceramic continues to improve roll lifespan and performance at the mill. As a result, NewPage had gains in efficiency and cost-effectiveness.



“PRG is an excellent strategic partner with their experienced and professional people. We know we can depend on PRG for high quality work and excellent service. Such a high comfort level is valuable to us.”

David A. Robinson
Area Maintenance Supervisor — Paper Mill
Wickliffe Paper Mill
NewPage Corporation



For total roll care, no one else even comes close™

To learn more about how PRG can solve your problems — as well as help you achieve the highest levels of productivity, day after day, year after year — please call our nearest location or visit www.precisionrollgrinders.com

Industries served

- Aluminum
- Chocolate
- Flooring
- Food Processing
- Forest Products
- Ink
- Nonwovens
- Paper
- Plastic
- Rigid Film
- Rubber
- Metals
- Specialty Metals
- Steel
- Turbine & Compressor



The Range of Roll Materials:

- Brass
- Carbide Coated
- Ceramic
- Chilled Cast Iron
- Chrome
- Composite
- Copper
- Engraved
- Forged Steel
- Granite
- Polyurethane
- Rubber
- Stainless Steel
- Steel

Services:

- Custom Roll Grinding (straight, crowns, tapers)
- Chrome Plating
- Computer-Controlled Special Profiles
- Dynamic Balancing
- Dynamic Leak Testing
- Grooving or Regrooving of Rolls
- Honing
- Hot Grinding
- Journal Repair/Replacement
- Lathe/Machining
- Matte Blasting
- Metal Spraying
- New Carbide Coatings
- New Ceramic Coatings
- New Chilled Iron Rolls & Shells
- Nickel Electroplating
- Reshelling
- Roll Fabrication
- Roll Repair
- Suction Roll Rebuilding
- Superfinishing & Mirror Polishing
- Turning
- Variable Crown Roll Rebuilding
- Welding

PHYSICAL CAPABILITIES

Grinding Capacity

Diameter	2" to 144"	50 mm to 3,660 mm
Length	up to 600"	up to 15,240 mm
Weight	up to 240,000 lbs.	up to 109,091 kg

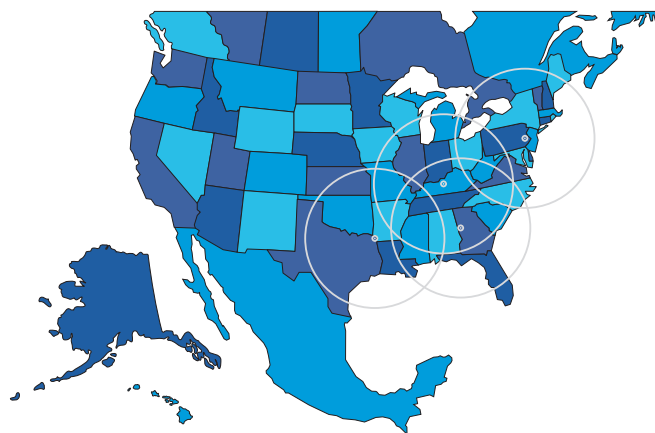
CNC Lathe Capacity

Diameter	66" over carriage 78.7" over ways	1,680 mm over carriage 2,000 mm over ways
Length	up to 840"	up to 21,336 mm
Weight	up to 200,000 lbs.	up to 90,910 kg

Tolerances:

Total indicated runout of face with respect to journals ± 20 millionths of an inch.
Surface finishes as fine as 1/4 micro inch Ra.

Multiple locations ...
to serve you better!



No one else even comes close™

6356 Chapmans Road
Allentown, PA 18106
Phone (610) 395-6966
Fax (610) 481-9130

400 Barnes Drive
Carrollton, GA 30117
Phone (770) 830-6323
Fax (770) 830-7024

200 Industrial Park Rd.
Lewisport, KY 42351
Phone (270) 295-4990
Fax (270) 295-4999

4000 East 19th Street
Texarkana, AR 71854
Phone (870) 216-4000
Fax (870) 774-6431



Authorized
Distributor for:

WALZEN
IRLE

www.precisionrollgrinders.com