



Delivering “Well-Rounded” Solutions

PRG is your partner in productivity

The Company

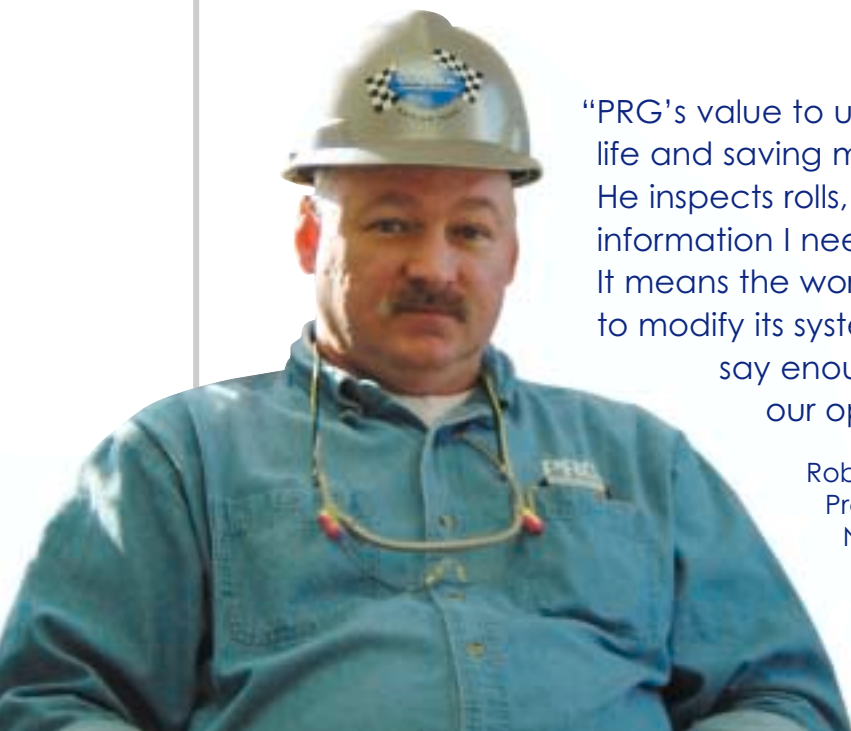
NGC Industries, a subsidiary of National Gypsum Corporation, manufactures paper used by wallboard producers nationwide. The plant, which uses 100 percent recycled paper, is located in Pryor, Oklahoma.

The Problem

Heavily used calender and wire return rolls showed wear bands shortly after regrinding — costing NGC a substantial amount of money in repeated regrinds, downtime and product quality. Two years ago, when Production Manager Robert Hickox discovered that NGC’s supplier was outsourcing his rolls, he decided to work directly with PRG.

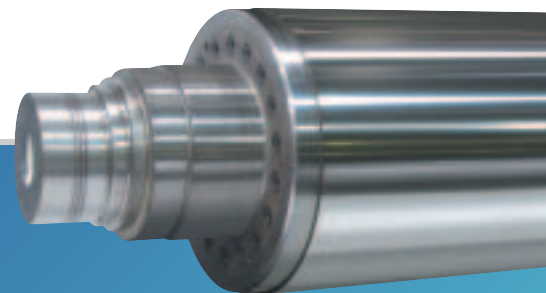
PRG’s Solutions

By consistently delivering truer, rounder rolls and introducing Roll ArmorSM ceramic coating, PRG has doubled the life of NGC’s rolls and dramatically cut customer complaints. PRG also discovered cracks and managed to rejournal several rolls, rather than replacing them. Recently, Account Manager Dorald Keefer and the PRG team designed a “tailor-made specsheet” that has enabled NGC to track its rolls more effectively.



“PRG’s value to us goes above and beyond equipment life and saving money. Dorald is always here for me. He inspects rolls, troubleshoots and gives me all the information I need to make the right decisions. It means the world to me when a company is willing to modify its system to accommodate ours. I just can’t say enough about how much PRG has helped our operation.”

Robert Hickox
Production Manager
NGC Industries



For total roll care, no one else even comes close™

To learn more about how PRG can solve your problems — as well as help you achieve the highest levels of productivity, day after day, year after year — please call our nearest location or visit www.precisionrollgrinders.com

Industries served

- Aluminum
- Chocolate
- Flooring
- Food Processing
- Forest Products
- Ink
- Nonwovens
- Paper
- Plastic
- Rigid Film
- Rubber
- Metals
- Specialty Metals
- Steel
- Turbine & Compressor



The Range of Roll Materials:

- Brass
- Carbide Coated
- Ceramic
- Chilled Cast Iron
- Chrome
- Composite
- Copper
- Engraved
- Forged Steel
- Granite
- Polyurethane
- Rubber
- Stainless Steel
- Steel

Services:

- Custom Roll Grinding (straight, crowns, tapers)
- Chrome Plating
- Computer-Controlled Special Profiles
- Dynamic Balancing
- Dynamic Leak Testing
- Grooving or Regrooving of Rolls
- Honing
- Hot Grinding
- Journal Repair/Replacement
- Lathe/Machining
- Matte Blasting
- Metal Spraying
- New Carbide Coatings
- New Ceramic Coatings
- New Chilled Iron Rolls & Shells
- Nickel Electroplating
- Reshelling
- Roll Fabrication
- Roll Repair
- Suction Roll Rebuilding
- Superfinishing & Mirror Polishing
- Turning
- Variable Crown Roll Rebuilding
- Welding

PHYSICAL CAPABILITIES

Grinding Capacity

Diameter	2" to 144"	50 mm to 3,660 mm
Length	up to 600"	up to 15,240 mm
Weight	up to 240,000 lbs.	up to 109,091 kg

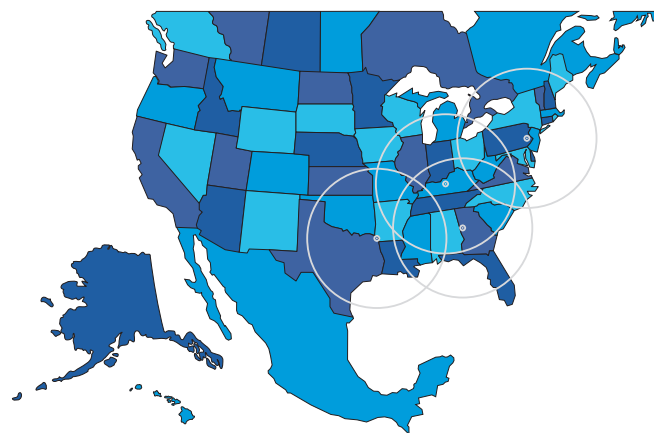
CNC Lathe Capacity

Diameter	66" over carriage 78.7" over ways	1,680 mm over carriage 2,000 mm over ways
Length	up to 840"	up to 21,336 mm
Weight	up to 200,000 lbs.	up to 90,910 kg

Tolerances:

Total indicated runout of face with respect to journals ± 20 millionths of an inch.
Surface finishes as fine as 1/4 micro inch Ra.

Multiple locations ...
to serve you better!



No one else even comes close™

6356 Chapmans Road
Allentown, PA 18106
Phone (610) 395-6966
Fax (610) 481-9130

400 Barnes Drive
Carrollton, GA 30117
Phone (770) 830-6323
Fax (770) 830-7024

200 Industrial Park Rd.
Lewisport, KY 42351
Phone (270) 295-4990
Fax (270) 295-4999

4000 East 19th Street
Texarkana, AR 71854
Phone (870) 216-4000
Fax (870) 774-6431

Authorized
Distributor for:



www.precisionrollgrinders.com